



THE  
JAPAN  
SOCIETY



# The Japan Society Impact Report 2025

*Cultivating the UK-Japan relationship since 1891*



## Introduction from our Chair

---



**The Rt Hon Greg Clark, Chair**

At the heart of The Japan Society is a commitment to learning, cultural exchange and lasting friendships between Britain and Japan. In 2025, we have hosted 108 events across business, arts & culture, education and special events.

We have also reached over 46,000 young people through our educational programmes and initiatives, and convened leaders from across business and government. These achievements reflect the strength of our community and the vibrancy of our mission.

I look forward to another year of deepening connections and creating new opportunities for understanding.

## Introduction from our Chief Executive

---



**Dr Michael Rivera King, Chief Executive**

I started this role in June 2023 and have been blown away by what the team has managed to achieve in that time. We have significantly strengthened our business work, formed strong bonds with parliamentarians, developed our events work, increased the impact of our education activities, and seen a very large increase in membership, both of individuals and corporates.

None of this would be possible without your support. I'm very grateful for your engagement, advice, and contribution to our community and our activities and excited to see what we can achieve together next.

## Supporters & Members - Corporate

---

This year, four new Corporate Donors joined our network:

- Brunswick Group Ltd
- Haddenham Healthcare Ltd
- Jera NEX Ltd
- Toyota Motor Europe

We are also grateful to **fifteen existing Corporate Donors who increased their contributions**, reaffirming their long-term commitment to our mission.

Our Corporate Donor's support strengthens our engagement with business communities across both the UK and Japan.

## Corporate Members

---

Our corporate membership base expanded further, with two new members joining in 2025:

- Ekiden Group Ltd
- Reflex Marine

## Charity and Institutional Members

---

We welcomed **six new Charity and Institutional Members**, broadening our network of cultural and educational partners:

- The British Chamber of Commerce in Japan (BCCJ)
- The British Museum
- Fukuoka Society
- Kansai Society
- Nippon Club
- St Johns Wood Library





## Individual & Family Members

---

Membership among individuals and families has grown impressively, with **272 new members joining between 1 January and 31 October 2025**; a testament to the continued interest in our activities and events.

## Individual Donors

---

We are delighted to welcome **two new Individual Donors**, while **two existing donors** have further increased their support.

Our community of Members and Supporters continues to grow, reflecting the strength of the UK-Japan relationship and the enthusiasm for shared cultural, educational, and business exchange.



## The 100 Guineas Club – Legacy Pledgers

---

**Founded in 1891**, The Japan Society received its first gift from **Emperor Meiji** - a donation of *100 guineas* - as a symbol of his hope for the Society's "continued prosperity".

In this spirit, the **100 Guineas Club** honours those who have pledged to leave a **Gift in their Will** to support the Society's long-term future.

We are deeply grateful to Bill Emmott, Yuuichiro Nakajima, and Sir David Warren for their support and generosity, ensuring the continued vitality of The Japan Society for years to come.

Looking ahead, we hope to welcome more legacy pledgers in 2026, strengthening the lasting foundation of support that sustains our mission.



*"Having been connected to, and fascinated by, Japan for more than 40 years (and hopefully many more to come), I would like my legacy to help future generations build the same connection that I did."*

Bill Emmott, Member of The 100 Guineas Club

## The Silken Threads

---

At our first Annual Dinner, in the Whitehall Rooms of the Hotel Metropole, our founding member, Arthur Diosy, told attendees that *'If The Japan Society succeeds, in the course of years, in twisting one more silken thread into the red cord between the hearts of the people of Japan and the hearts of the people in Britain, then, I think, our Society will not have existed in vain.'*

In 2025 we also **launched a new tier of Individual Donor support, of £5,000, called 'The Silken Threads'**. This contribution is specifically for a new project we have started this year to cultivate the next-generation of UK-Japan leaders.

We are deeply grateful to Stephen and Kimiko Barber, Bill Emmott, John Howland Jackson, Mami Mizutori, Christopher and Phillida Purvis, Larry Stone, and Sir David Warren who are our first cohort of The Silken Threads initiative.



## Events

We **delivered 108 events in 2025**, with key speakers discussing topics across culture and arts, education, business and diplomatic relations. Our events portfolio continues to grow, with many events planned for 2026.



**Over 40,000**

event attendees across  
108 events



**£8,000**

received from Toshiba  
Foundation for our  
Monthly Lecture Series



**Special Member  
tickets for  
Exclusive Events**

Including access to the  
**First Sumo Tournament**  
held in the UK in 34 years



## Special Events

---

Our Key Special Events included the Lecture and Dinner with Ambassador Julia Longbottom CMG, British Ambassador to Japan (kindly hosted by Nomura), Japan Matsuri at Trafalgar Square, our Annual Dinner at the House of Commons with The Rt Hon Michael Portillo (kindly supported by JTI), the Sir Hugh Cortazzi Lecture with Dame Karen Pierce DCMG, and will conclude with The Japan Society Christmas Party 2025, supported by The Embassy and our President, Ambassador Suzuki.

## Business

---

Our Business Series included:

- *Industrial Strategy 8 Roundtable: Life Sciences, with Lord Vallance KCB FRS FMedSci FRCP HonFREng, Minister for Science, Innovation and Research and Steve Bates OBE, Executive Chair of the Office of Life Sciences*
- *Women in Work: What Can Companies Do to Level the Playing Field?* (kindly hosted by SMBC) and *Women in Work: Lessons from Female Leaders* (kindly hosted by Deloitte LLP)
- *Japan Macro Salon with Jesper and Bill*. This year's themes included Japan's political transition, global trade dynamics, economic and market trends, and the country's foreign and defence strategy

## Arts & Culture

---

We ran **20 events across Arts & Culture**, including:

- *Discover the World of Shogi – Japanese Chess Workshop*
- *Hiroshige: Artist of the Open Road – Private View with Curator Dr Alfred Haft at British Museum*
- Private Views at museums and galleries – including London Design Biennale

## Today in Japan

---

We ran **11 events across our 'Today in Japan' series**, which seeks to provide our members a chance to hear from key leaders in their area of work about their views on modern Japan. This year, our events included:

- *Exploring Japan: A Diplomatic Journey with Ambassador Paul Madden*
- *Atomic People: Memories of the Hibakusha on Screen with filmmaker Megumi Inman*
- *Special Film Club: Tea & Screening with Director Akihiro Toda (in partnership with Japan Foundation)*





*"It was great to connect with such a vast range of members of the Society. As a young member, it's nice to see that others my age share such a passion for Japan as much as I do, and to hear stories from people that have been members for decades. This was my first time attending the dinner, and I look forward to attending many more over the years!"*

Annual Dinner attendee



*"I very much enjoyed attending the introduction to Shogi event for beginners last month."*

Shogi Workshop attendee

*"Thank you for organising such a great evening. It was so very enjoyable and good to meet other members of the Society. I am glad I was able to be part of it. Good memories."*

Sumo Tournament attendee





## Education

In 2025, The Japan Society's education programmes continued to inspire learning, connection, and cultural understanding across the UK. From classroom visits and teacher resources to creative workshops and youth initiatives, our work has reached thousands of students, teachers, and families, deepening engagement with Japan.

### Downloadable Resources for Teachers

Our online resource library continues to make teaching about Japan accessible to all. Between January and October 2025, **our materials were downloaded 1,414 times** via TES, **reaching an estimated 42,420 learners**.

We also **released six new resources**, including History of the Samurai and Sumo, commissioned by the Royal Albert Hall which have become popular teaching aids.

### Japan in Your Classroom

Japanese volunteers visited 29 schools and educational organisations across the UK, **including 11 first-time visits**, reaching around **1,500 students**. These sessions introduced pupils to aspects of everyday life in Japan and helped to build lasting cross-cultural curiosity and understanding.

### Outreach Activities

Our Education Team delivered three calligraphy workshops, including two held with local libraries in Greater London as part of **East and Southeast Asian Heritage Month, reaching over 40 participants** from diverse backgrounds.

### Loan Resources

Our free loan resource scheme provided cultural artefacts and teaching materials to **31 schools and organisations, 13 of them new participants**, reaching approximately **2,125 students**. Teachers continue to report how these hands-on resources help bring lessons about Japan to life.



*"We are a school for students mostly with an autism diagnosis... having a visitor coming to speak to a wide number of students and teach them on subject of interest in a wider group was inspiring for them... This session has widened their knowledge of Japanese culture and worked on building their confidence through attending the session."*

Teacher Feedback about a Subsidised School Visit



## Key Education Activities

---

### Express Yourself: Festival of Languages North East 2025

We supported this year's online festival celebrating global languages and cultures. Our downloadable Japanese language resources were accessed by **40 registrants** (including **30 schools and 2 community groups**), **reaching approximately 2,300 students, 60% of whom were learning about Japan for the first time.**

### New Educational Resources

As a part of our wider initiative to create free online resources to engage and inspire students, and support teaching about Japan, we have updated and created a number of new resources in 2025. This included publishing an updated “Studying Japanese at University” booklet, providing essential guidance for students considering Japanese Studies in higher education.

### Teachers' Pack for the Grand Sumo Tournament at the Royal Albert Hall

In partnership with the Royal Albert Hall, our team developed a sumo-themed teachers' pack, estimated to have reached at least 75 schools and 2,000 pupils nationwide.

### Travel Bursary for Schools to attend the Grand Sumo Tournament

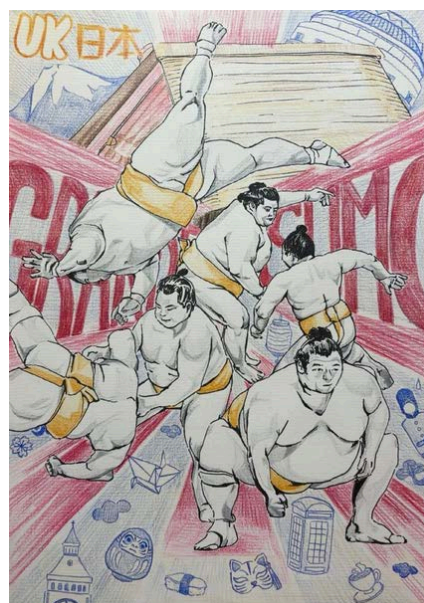
With funding from the Great Britain Sasakawa Foundation, 149 pupils from six schools in South Wales, the East of England, and the Midlands travelled to London to attend a Schools' Sumo Presentation at the Royal Albert Hall in October 2025.

### UK Grand Sumo Tournament Poster Design Contest

We received over 180 entries from students across the UK, including over 100 from secondary schools, indicating a growing interest in Japan among older pupils.



Aidan, 7  
Winner (Primary School)



Jessie, 17  
Winner (Secondary School)





## The Japan Youth Collective

---

Now in its second cycle, The Japan Youth Collective offers 16–19 year olds a chance to explore Japan while developing leadership and creative skills.

This year, we received over **56 applications from 23 areas** across Greater London and beyond, **welcoming 16 new members from 14 different areas of London.**

Since the residential orientation in August, participants have attended eight sessions and 20+ workshops/talks, with more to follow in early 2026.

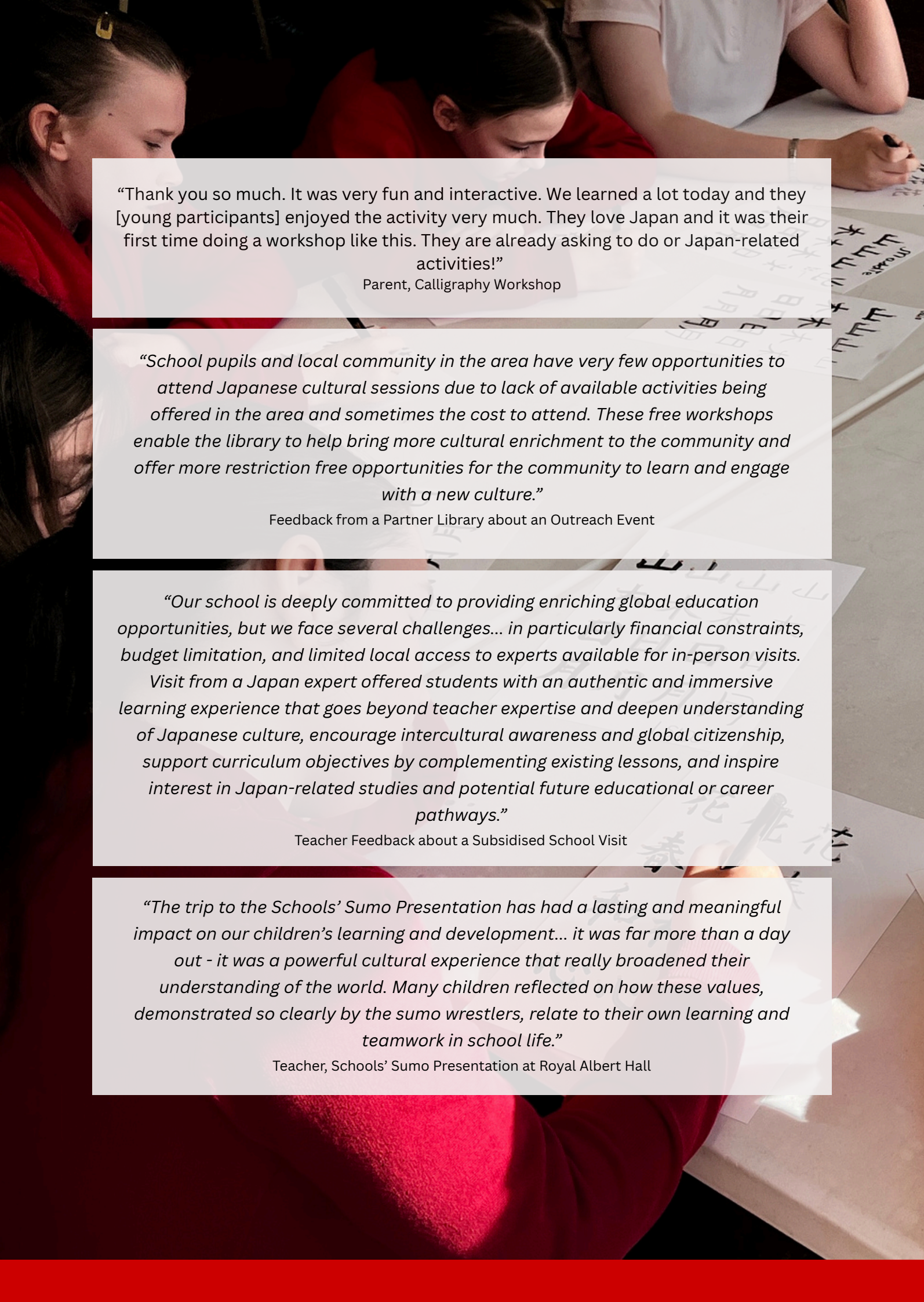
## Embassy of Japan Grant Projects

---

We delivered two projects funded by the Embassy of Japan in the UK, **reaching over 1,500 students nationwide.**

1. **Access to Experts:** Remote Subsidy Scheme Expansion: Supported 10 school visits across five UK regions, **reaching 1,000+ students.**
2. **Collaborative Outreach:** Partnered with four library groups in London, Cardiff, and Gateshead, and a non-profit in Newcastle, **broadening access to cultural learning.**





*“Thank you so much. It was very fun and interactive. We learned a lot today and they [young participants] enjoyed the activity very much. They love Japan and it was their first time doing a workshop like this. They are already asking to do or Japan-related activities!”*

Parent, Calligraphy Workshop

*“School pupils and local community in the area have very few opportunities to attend Japanese cultural sessions due to lack of available activities being offered in the area and sometimes the cost to attend. These free workshops enable the library to help bring more cultural enrichment to the community and offer more restriction free opportunities for the community to learn and engage with a new culture.”*

Feedback from a Partner Library about an Outreach Event

*“Our school is deeply committed to providing enriching global education opportunities, but we face several challenges... in particularly financial constraints, budget limitation, and limited local access to experts available for in-person visits.*

*Visit from a Japan expert offered students with an authentic and immersive learning experience that goes beyond teacher expertise and deepen understanding of Japanese culture, encourage intercultural awareness and global citizenship, support curriculum objectives by complementing existing lessons, and inspire interest in Japan-related studies and potential future educational or career pathways.”*

Teacher Feedback about a Subsidised School Visit

*“The trip to the Schools’ Sumo Presentation has had a lasting and meaningful impact on our children’s learning and development... it was far more than a day out - it was a powerful cultural experience that really broadened their understanding of the world. Many children reflected on how these values, demonstrated so clearly by the sumo wrestlers, relate to their own learning and teamwork in school life.”*

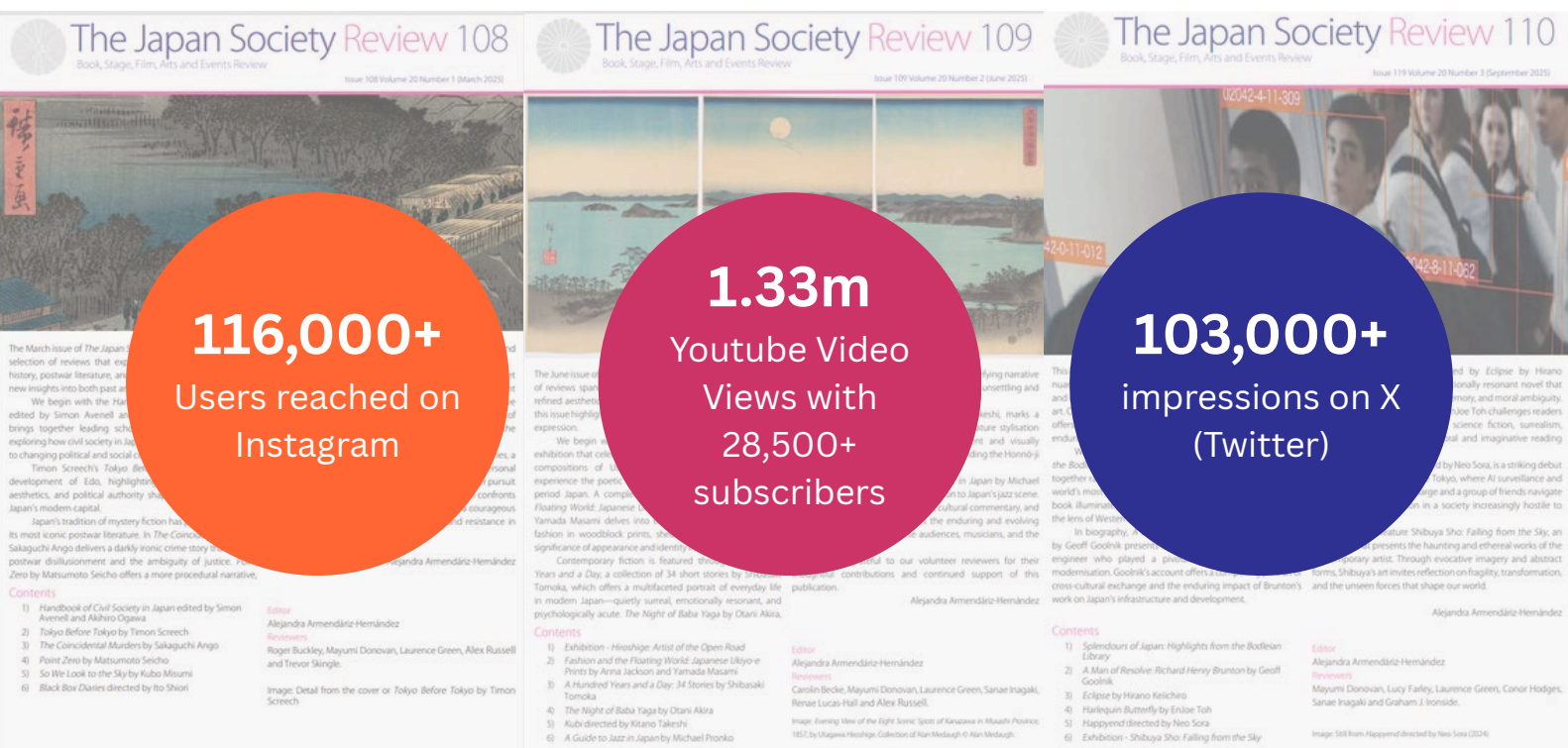
Teacher, Schools’ Sumo Presentation at Royal Albert Hall

## Communications and Publications

In 2025, communications and publications continued to play a vital role in strengthening The Japan Society's reach, awareness, and community engagement across multiple channels. Significant progress was made in digital integration, audience growth, and publication output.

Over the year, we delivered **more than 125 newsletters**, segmented for different audiences, members, non-members, donors, corporates, and individuals, ensuring tailored and relevant content. Newsletters included the **Education, Review, and External Events** series.

Our digital reach grew steadily across all major platforms, with a total of **nearly 80,000 followers**, a significant increase in the last year. These figures highlight the Society's growing digital influence and engagement with audiences interested in UK-Japan relations, culture and education.



## Publications

The Society continued to provide high-quality editorial content and publications throughout 2025:

- **The Japan Society Review:** Three issues published (March, June, and September), featuring 39 new reviews, with the final of the year coming in December 2025.
- **Proceedings:** New issue to be published by the end of 2025.
- **Book Publications:** Two new volumes are planned for 2026 release.





## Enhancing Our Communications

---

A **new email system** for members was successfully integrated with our new database, marking a major step toward a more streamlined communication process.

- **Phase 1** (Individual Members, Donors, and Charity & Institutional Members) was completed in 2025, including comprehensive data cleaning.
- **Phase 2** (Corporate Members and Donors) is underway and will be completed by the end of 2025.
- **Phase 3** (Non-Members) is scheduled for **Q1 2026**.

## Paperless Communications

---

As part of our efforts to be more environmentally friendly, we no longer send out paper communications and have introduced a new digital welcome pack, fully integrated with our new database.

## Secretariat Roles

---

In 2025, The Japan Society continued to play a key role in facilitating dialogue and collaboration between the UK and Japan at the highest levels, providing secretariat support to key bilateral groups and parliamentary initiatives.

## British–Japanese All-Party Parliamentary Group

---

As Secretariat for the British–Japanese All-Party Parliamentary Group, The Japan Society supports parliamentarians in strengthening UK–Japan relations through dialogue, information exchange, and cultural understanding.

This year, we organised a full programme of events, including:

- Parliamentary Briefings with Ambassador Suzuki and Ambassador Longbottom
- Celebration of the Manchester–Osaka Partnership (Reception) with Andy Burnham, Mayor of Greater Manchester
- Summer Reception
- APPG Defence & Peacebuilding Lunch
- Parliamentary Delegation Visit to Japan, accompanied by Dr Michael Rivera King)

These activities have deepened engagement between policymakers, diplomats, and business leaders, helping to strengthen the close ties between the two countries.



## UK–Japan 21st Century Group

---

The Japan Society continues to serve as Secretariat for the **UK–Japan 21st Century Group**, facilitating dialogue between senior figures from government, business, and academia. This year's work has focused on planning the next bilateral meeting and supporting ongoing collaboration following the 2024 postponement due to the election period.

We were delighted to support the 41st Conference, held in London and Fordham Abbey in March 2025, which included a meeting at No. 10 Downing Street with Deputy PM Angela Rayner.



If you wish to learn more about contributing to the charitable activities of The Japan Society, please contact our **Head of Partnerships, Alice Vicentin**, at **membership@japansociety.org.uk** or by phone on **020 3075 1997**.

